



EVOKE FIRMWARE UPDATES:

# EVOLVE YOUR HEARING TECHNOLOGY



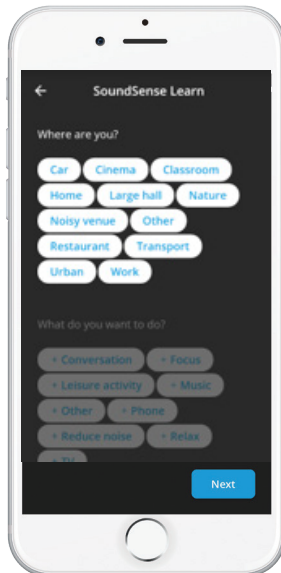
## Download the new EVOKE firmware update to see how your EVOKE hearing aids keep getting smarter!

Similar to smartphones and other technology that you might use, your Widex hearing devices have automatic firmware updates to optimize performance and introduce new features and functions. Widex makes it easy and lets you conveniently install these updates from your phone without having to schedule an extra visit to the clinic.

### New features available in the EVOKE app version 1.2:

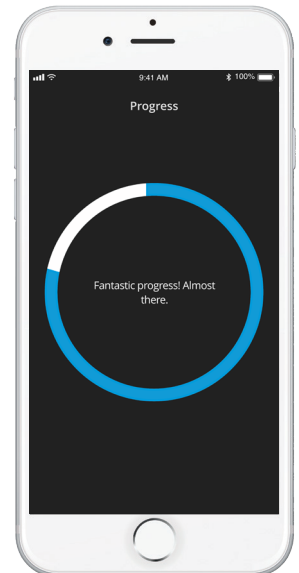
1

Quickly select intent and environment to allow SoundSense Learn to identify your listening goals.



2

Easily monitor your SoundSense Learn progress! Complete the Progress Circle for optimal hearing. Stop anytime once satisfied. Apply preferences immediately with new Exit button.



3

### Additional Updates:

- Temporarily turn hearing aid Bluetooth off. Great for streaming in the car, sharing your phone or high security buildings
- New Directional Focus shortcut to easily switch into primary program
- Apple Native app enhancements for tone control

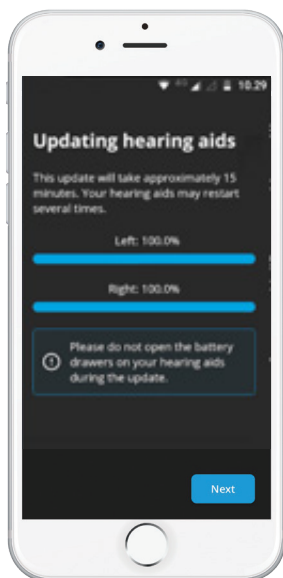
**PLUS...**

More performance improvements for the best listening experience possible!



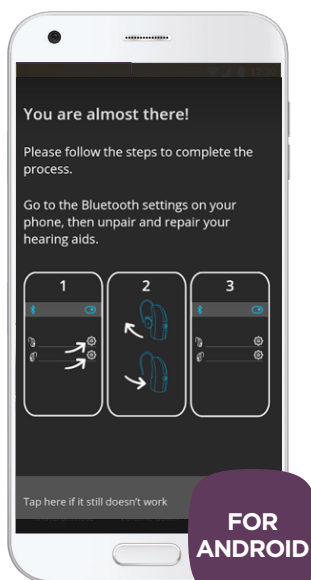
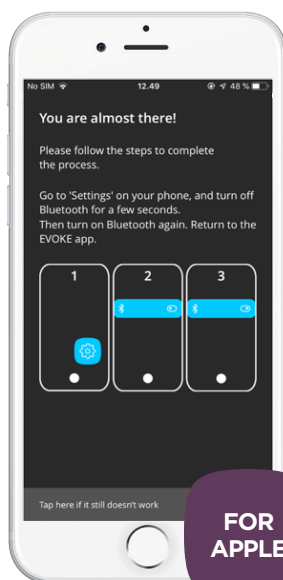
EVOKE FIRMWARE UPDATES:

# EVOLVE YOUR HEARING TECHNOLOGY



Update EVOKE hearing devices directly through the EVOKE app by going to the App Store® or Google Play™.

- Once updated, open the EVOKE app and follow the prompts to start the firmware process.
- Please note, If you are upgrading from version 1.1, the update should take approximately 5 minutes. If you are upgrading from version 1.0, this update could take up to 15-20 minutes and will automatically restart your hearing devices multiple times.
- This process will be faster if you are able to keep your hearing devices close to the phone.
- Please plan to do this update at a convenient time.



## Bluetooth reconnecting instructions:

**Note:** For this specialized firmware and app update, it will be necessary to reconnect your Bluetooth after the firmware is installed.

Follow the steps shown to complete the firmware update.

**NOTE:** If your phone is set for automatic app updates, the firmware update process will start as soon as you open the EVOKE app. For Apple® users, you can continue to use the Apple native app without triggering the firmware update process if you need to control your hearing devices until finding a more opportune time to complete the firmware update.



Apple, the Apple logo and iPhone are trademarks of Apple Inc., registered in the U.S. and other countries. App Store is a service mark of Apple Inc. Google Play and the Google Play logo are trademarks of Google Inc.